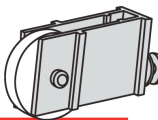


# ROLLERCO



*Window & Door Spare Parts*

Rollerco Number

1-2910

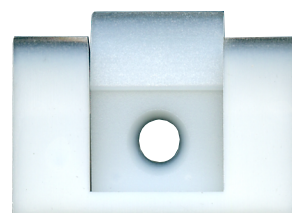
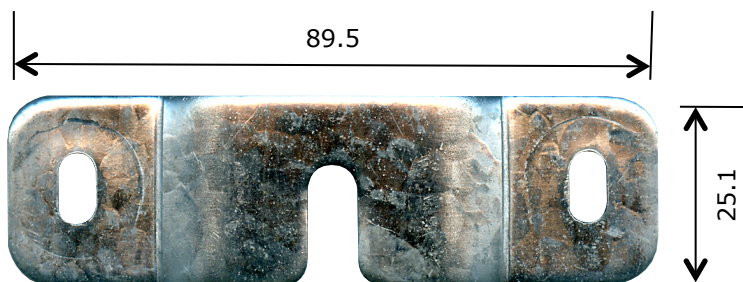
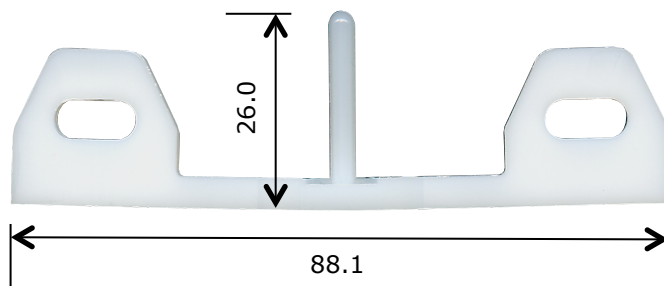
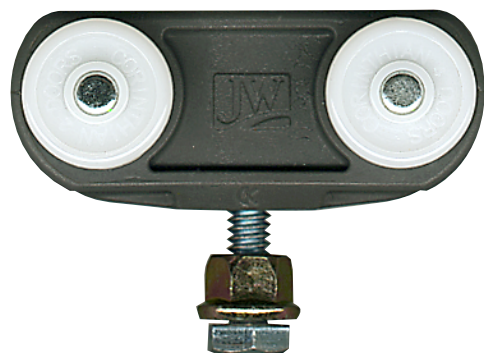
Part Name

Cavity Door Hardware Kit

Description

Hardware kit to suit Corinthian / Jeldwen Slimline 3000 series cavity door suite. Pack includes 2 carriage assemblies and brackets, floor guide, spanner, spanner clip and fixings.

Picture



Spanner Clip



Adjusting Spanner

Notes / Comments

Quad nylon roller plastic trolley fitting and steel mounting brackets, Plastic reversible floor guide, pressed steel spanner and all associated fixings. For roller trolley sizing, see part 1-2870.

Unit of Supply

Each

Recommended Maximum Load

60kg

Adjustment Range

10mm

**ROLLERCO**

3, 26-28 Jacobsen Crescent, Holden Hill, South Australia 5088

P: 08 8266 2554 F: 08 8266 1522 E: sales@rollerco.com.au

Reproduction of this document in any part is not allowed without the written consent of Rollerco. Whilst all care has been taken in its accuracy, Rollerco accept no liability for any errors.