

PEARL WINDOW LOCK

for sliding windows

Gainsborough[®]
fine quality door furniture

MADE IN AUSTRALIA BY
Austral Lock

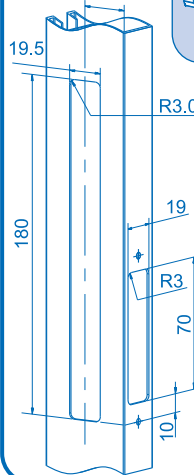
Illustrated fitting instructions



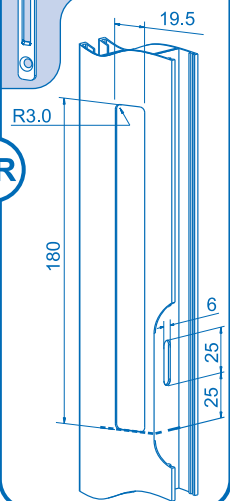
1. Prepare cutouts for lock

CUTOUT TO SUIT
STANDARD
CATCH PLATE

22 to 27.5 RANGE



CUTOUT TO SUIT
FLAT CATCH PLATE
(not included)

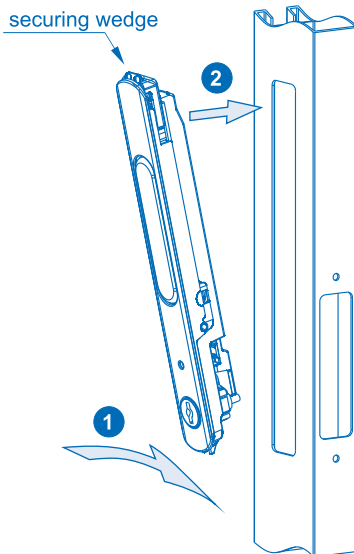


OR

! Cut 180 x 19.5 slot through single face only.

2. Fit Lock into section

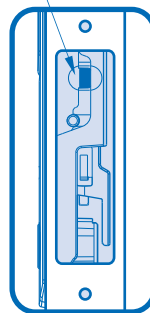
- Fit bottom end of **lock** into the cutout and then press the top end in until the top **securing wedge** clips into place.



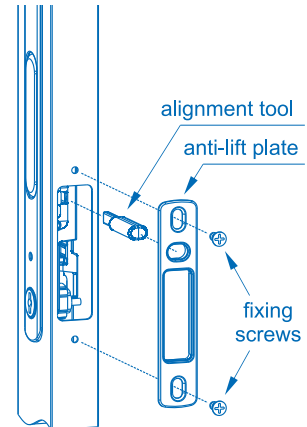
3. Fit Anti-lift Plate

- Insert the **alignment tool** into the side of the **lock body** as shown in the detail side view.
- Place the **anti-lift plate** over the **alignment tool** and onto the side cutout.
- Mark and drill two $\varnothing 3.5$ mm holes centrally within the slots in the **anti-lift plate** (if not pre-drilled).
- Secure the **anti-lift plate** with two **fixing screws** then remove the **alignment tool**.

insert alignment tool into this slot

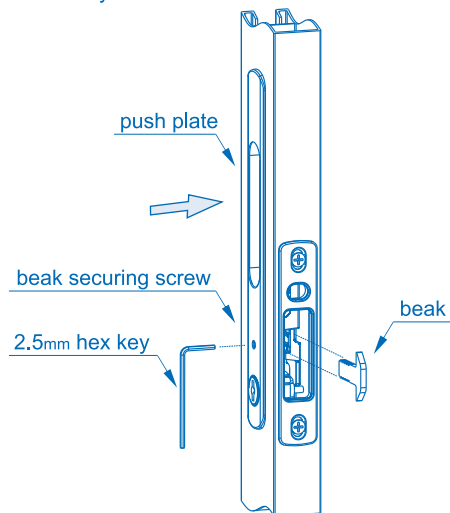


Detail Side View



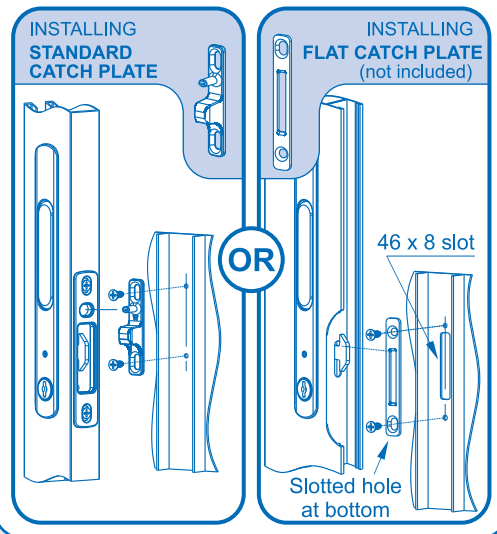
4. Install and adjust Beak

- 1 Press **push plate** completely in and then insert **2.5mm hex key** into the **beak securing screw**.
- 2 Insert the **beak** into the **lock body** as shown, and tighten the **beak securing screw**.
NOTE: The **beak** can also be adjusted horizontally after the window is fitted.



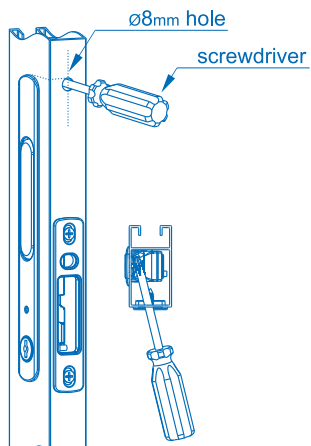
5. Install Catch Plate

- 1 Prepare jamb and secure the standard catch plate or flat catch plate using two fixing screws.
- 2 Open and close window to check alignment of the catch and the position of the beak.
- 3 Adjust beak and/or catch if necessary.



6. Removal of Lock

- 1 Remove the beak (Step 4 in reverse).
- 2 If possible, insert a metal bar down through the top of the window section to push down the top securing wedge and remove the lock.
- 3 If there is no access through the top of the window then drill a $\varnothing 8\text{mm}$ hole as shown and insert a screwdriver (as shown) to push down the top securing wedge and remove the lock.



(PK0254) PEARL Window instructions (Trade A5) R1.02R



Austral Lock Pty Ltd
31-33 Alfred St, Blackburn
Victoria 3130 Australia
ph (+61 3) 9877 1555
www.ausloc.com